



Loudspeaker 100-B



Instructions

Radio Corporation of America

233 **Broadway** 100 West Monroe Street 101 **Marietta Street**
New York City Chicago, 111. **Atlanta, Ga.**
235 Montgomery Street Santa Fe Building, Unit No. 1
San Francisco, Cal. Dallas, Texas

RCA

Loudspeaker 100-B

RCA Loudspeaker 100-B will provide particularly fine quality of reproduction when used with the modern type of radio broadcast receiver. Its excellent tone qualities are especially apparent, however, when used with Radiolas. The maximum capabilities of Loudspeaker 100-B are obtained when it is connected to a radio receiver, or an amplifier unit, in which power-amplifier Radiotrons UX-120, UX-112-A or UX-171-A are used in the last audio stage.

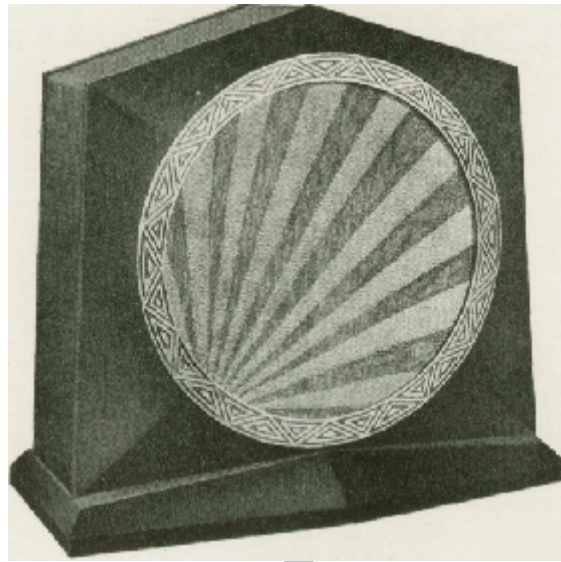


Fig. 1. RCA Loudspeaker 100-B

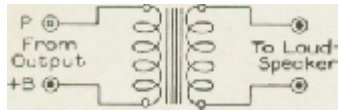
INSTALLATION

Loudspeaker 100-B is shipped completely assembled and adjusted, and is ready for use upon removal from the shipping container. In unpacking, handle the Loudspeaker with care.

Loudspeaker 100-B, when operated from power-amplifier tubes, will give more satisfactory operation if an output coupling device such as a 1 to 1 ratio RCA Output Transformer (Fig. 2), or a choke coil and condenser (Fig. 3) is used. Either of these devices serves to eliminate the DC plate current from the Loudspeaker winding, giving improved reproduction and prolonging the life of the Loudspeaker. Such a device is absolutely necessary with Radiotron UX-171-A, or with other power tubes, when the plate current exceeds 10 milliamperes. With Radiotrons UX-112-A and UX-120, an output device is desirable though not absolutely necessary. Consult your dealer or refer to the instructions furnished with your receiver to ascertain if it is so equipped. Radiolas are equipped with output devices.

If operated directly from a receiver insert the pin-terminals on the end of the loudspeaker cord into the loudspeaker pin-jacks or binding posts of the radio receiver.

If used with a receiver in conjunction with a power-amplifier unit, connect the loudspeaker cord to the output of the power-amplifier unit, and connect the input cord of the latter to the receiver in accordance with instructions accompanying the power-amplifier.



1:1 Ratio

Fig* 2. Loudspeaker Coupling Transformer Method

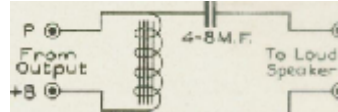


Fig. 3. Loudspeaker Coupling Choke and Condenser Method

In selecting a location for the loudspeaker, consideration should be given to the acoustics of the room in which it is placed, as when placing any musical instrument.

GENERAL INFORMATION

Best reproduction will be obtained by proper adjustment of the selector and volume control of the radio receiver.

Should faulty reproduction develop, look first for difficulties in the radio receiver (and power-amplifier unit, if used). If the trouble appears to be confined to the loudspeaker, look for loose cord tips or broken cords.

RCA AUTHORIZED DEALER

The RCA Authorized Dealer is required to test this Loudspeaker and assure himself that it is in satisfactory operating condition when installed.

This Loudspeaker is guaranteed to be free from defects as outlined on the guarantee tag accompanying the instrument. Should any part become defective within the guarantee period, the RCA Authorized Dealer will furnish a new part to replace the defective one. A reasonable charge may be made for installing such parts.

If any service on this Loudspeaker is needed, either before or after the expiration of the 90-day guarantee, the RCA Authorized Dealer from whom it was purchased should be consulted. If this Dealer cannot be reached because of change in location, or other reasons, the nearest RCA Authorized Dealer should be consulted. RCA Authorized Dealers are organized to handle customers' service needs either by their own service department or by arrangement with their distributor.

IMPORTANT

The RCA 90-day guarantee on this Loudspeaker is not effective unless the RCA Guarantee Tag is countersigned and dated at time of sale by the RCA Authorized Dealer from whom it was purchased. If you have not received the signed Guarantee Tag, be sure to have the RCA Authorized Dealer give it to you immediately.

NOTICE

The apparatus and devices which, or the use of which, **are** covered by patents are sold only under certain specified licenses set forth in a notice attached permanently to the said apparatus and devices, or if this is impracticable on account of size, then on tags or wrappers attached to the said apparatus and devices or on the cartons containing the same. This license notice is as follows:

"In connection with devices it sells. Radio Corporation of America has rights under patents having claims (a) on the devices themselves and (b) on combinations of the devices with other devices or elements, as for example in various circuits and hook-ups.

"The sale of this device carries a license under patent claims of (a), but only for (i) talking machine uses, (2) radio amateur uses, (3) radio experimental uses and (4) radio broadcast reception; and only where no business features are involved.

"The sale does not carry a license under patent claims of (b) except only (i) for legitimate renewals and repairs in apparatus and systems already licensed for use under such patent claims on combinations, (2) for assembling by amateurs and experimenters, and not by others, with other licensed parts or devices, or with parts or devices made by themselves, but only for their own amateur and experimental radio uses where no business features are involved, and not for sale to or for use by others, and (3) for use with licensed talking machines and licensed radio broadcast receiving devices; and only where no business features are involved."

RADIO CORPORATION OF AMERICA

IB-100B

Printed in U.S.A.